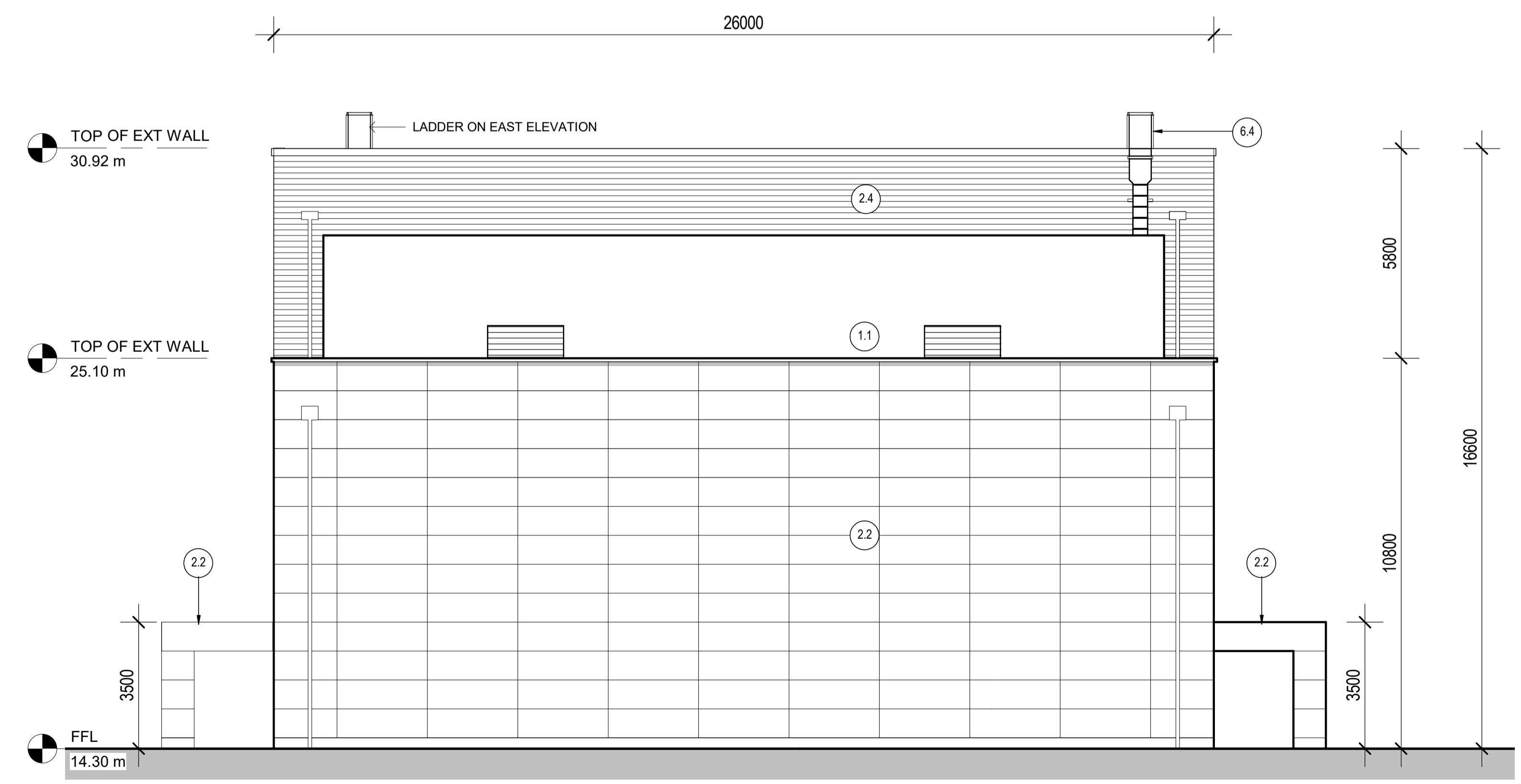


**1 EAST ELEVATION**  
100027 SCALE 1:100



**2 WEST ELEVATION**  
100027 SCALE 1:100

**Materials Key**

**Vertical Enclosure - Wall**

<b>1 Concrete/ render finishes</b>	<b>5 Doors</b>
1.1 In-situ concrete	5.1 Metal door
1.2 Pre-cast concrete	5.2 Metal louvre door
1.3 Render finish	5.3 Glazed door
	5.4 Access gates
<b>2 Cladding</b>	<b>6 Window/ metalwork accessories</b>
2.1 Aluminium standing seam	6.1 External fabric blinds
2.2 Aluminium panels	6.2 Cavity venetian blinds
2.3 Aluminium planks	6.3 Glazed balustrade
2.4 Profiled steel panels	6.4 Metal stairs and ladders
2.5 Flat steel panels	
2.6 Fibre cement cladding	<b>Horizontal Enclosure - Roof</b>
2.7 Glass reinforced plastic	
<b>3 Glazing/ translucent materials</b>	<b>7 Roofing</b>
3.1 Cast glass c-channel	7.1 Sedum roof
3.2 Frameless glazing	7.2 Ballast
3.3 Framed glazing	7.3 Standing seam roof
3.4 Opaque glazed spandrel panel	7.4 Concrete roof
3.5 Polycarbonate translucent cladding	
<b>4 External wall features</b>	<b>8 Roofing accessories</b>
4.1 Aluminium trims, copings and casings	8.1 Roof light
4.2 Aluminium louvres	8.2 Roof vents and hatches
4.3 Glass louvres	8.3 Metal cappings and copings
4.4 Aluminium brise-soleil	8.4 Paving
4.5 Glass brise-soleil	8.5 PVs and solar panels
4.6 Mesh expanded metal panels	8.6 Timber decking
4.7 Fencing	
4.8 Barbed tape	<b>9 Additional Materials</b>
4.9 Retractable steel shutters	9.1 Bitumen roof

REVISION	DATE	DRAWN	CHECKED	REASONS FOR REVISION/ COMMENTS	APPROVED
01	JUNE 2020	GA	GA	PERMANENT DEVELOPMENT DCO CHANGE SUBMISSION	NNB



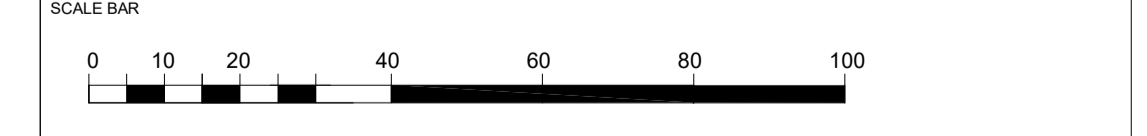
HINGLEY POINT C

DRAWING TITLE  
Hinkley Point C Development Site  
Emergency Response Centre (HUM)

Elevations  
Regulation 5(2)(o)

PROJECT DRAWING REFERENCE NO. HINK-A2-HUM-00-GE-001	REVISION 01	SCALE 1:100 @ A1	DATE JUN 2020
--	----------------	---------------------	------------------

DOCUMENT  
DCO Change Application Drawing - Detail (for Approval)



DRAWING SECURITY CLASSIFICATION

<input type="checkbox"/>	PROTECTIVE MARKING REQUIRED
<input checked="" type="checkbox"/>	NOT PROTECTIVELY MARKED